

IMPORTANT SAFETY INSTRUCTIONS

1. All the safety and operating instructions should be read before this product is operated. Keep these instructions for future reference.
2. Pay attention to all warnings on the power supply and in the operating instructions.
3. **WARNING:** Do not use this device near water or any other liquid.
4. Clean only with dry cloth.
5. Do not block any ventilation openings.
6. Do not use this device near any heat sources.
7. Do not remove the power plug grounding pin on the input cable.
8. Protect all input and output power cables from being walked on or pinched.
9. Only use attachments/accessories specified by the manufacturer.
10. Use only with the brackets and screws provided with this power supply.
11. Unplug this device during lightning storms or when unused for long periods of time.
12. Refer all repairs to qualified personnel at Truetone or an authorized Truetone distributor. Under no circumstances should the power supply be opened by the user.
13. This lightning flash with arrowhead symbol within an equilateral triangle is intended to alert the user to the presence of non-insulated "dangerous voltage" within the product's enclosure that may be of sufficient magnitude to constitute a risk of electric shock.



- **WARNING:** To reduce the risk of electric shock, do not remove cover (or back) as there are no user-serviceable parts inside. Refer servicing to qualified personnel.
 - The exclamation point within an equilateral triangle is intended to alert the user to the presence of important operating and maintenance instructions in the literature accompanying the appliance.
14. The maximum ambient temperature should not exceed 35 degree C.
 15. Date code: YYMM, YY means year, MM means month. For example: 1612 represents Year 2016, December.

1 SPOT[®]

PRO

CS 6 - pure isolated power

Owners Manual

TRUETONE[®]

www.Truetone.com

Need some great pedals to go
with your 1 SPOT Pro?

Check out Truetone pedals at
Truetone.com

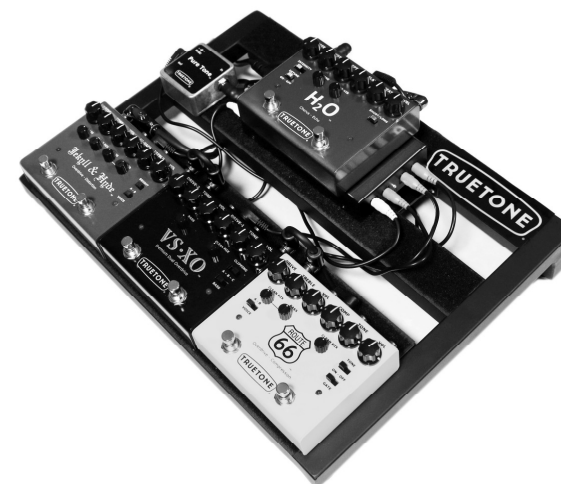


Mounting your 1 SPOT Pro CS6 under or on top of a pedalboard:

The 1 SPOT Pro CS6 comes with three screws inserted into mounting screw holes on the top of the unit (spare screws are also included). These are for mounting your CS6 under pedalboards like those from Pedaltrain®. Just use the drill template included with your new CS6, to drill mounting holes under your pedalboard.



You can also mount your CS6 on top of any pedalboard, using Velcro®. The low-profile design of the CS6 makes it an excellent pedal riser, enabling you to put pedals on top of it.



Please see the 1 SPOT Pro CS6 Mounting Guide video on Truetone.com, for complete instructions and ideas on how to mount your CS6.

Congratulations on your purchase of the 1 SPOT Pro CS6 Power Supply by Truetone! The 1 SPOT Pro CS6 provides 6 outputs to power just about any effect pedal. All 6 outputs are completely isolated, regulated, and filtered to provide quiet and safe operation for your valuable effects pedals.

The 1 SPOT Pro CS6 contains the following in the package:

- 1 SPOT Pro CS6 Power Supply
- IEC input power cable
- (3) mounting screws, (3) spare mounting screws and (1) drill template
- Output power cables (all are center pin negative polarity):
 - (1) DC26 (5.5x2.1mm barrel plugs; 26" (660mm) – Purple
 - (1) DC22 (5.5x2.1mm barrel plugs; 22" (559mm) – Blue
 - (1) DC18 (5.5x2.1mm barrel plugs; 18" (457mm) – White
 - (3) DC12 (5.5x2.1mm barrel plugs; 12" (305mm) – Yellow
 - (1) MC2: Two 5.5x2.1mm barrel plugs with 5.5x2.1mm input socket

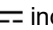
Converter Plugs:

- (1) CL6 – Green – for Line 6 DL4/M9/etc. and some Eventide pedals.
- (1) CYR – Red – reverse polarity converter
- (1) C35 – Black – 3.5mm (1/8") plug converter
- (1) CBAT – Black battery clip

Specifications of the 1 SPOT Pro CS6:

Input: 100-240V~, 50/60Hz, 0.55A (Worldwide input voltage)

Outputs: 6 Outputs are marked on the bottom of the CS6:

Note: This symbol  indicates DC voltage.



The bottom panel of the 1 SPOT Pro CS6 contains 4 mini-switches that change the voltage of outputs 3-6. The switches are in the same order as the outputs.

- Switch 1: Output 3 – Off=9Vdc; On=18Vdc
- Switch 2: Output 4 – Off=9Vdc; On=18Vdc
- Switch 3: Output 5 – Off=9Vdc; On=12Vdc
- Switch 4: Output 6 – Off=9Vdc; On=12Vdc

Note: Output numbers are not marked on actual unit.

Voltage Input:

The 1 SPOT Pro CS6 can be used anywhere in the world without the use of a step-up or step-down transformer. It transforms wall voltage from 100-240Vac, and converts it into the stated voltages on the bottom panel of the unit.

Which output and settings do I use for my pedals?

It is important for you to know the power requirements for your pedal. For every pedal that you are going to power via the 1 SPOT Pro CS6, you need to know the following:

1. What is the voltage required by the pedal?
2. Does the pedal require AC or DC voltage? (Hint: battery = DC)
3. What is the polarity of the pedal? (Center pin positive or negative.)

These questions can usually be answered by:

1. Inspecting the pedal itself near the power jack.
2. Referring to the owner's manual.
3. Checking online, or contacting the manufacturer.
4. If your pedal can be powered by a 9Vdc battery, it can be powered by one of the 9Vdc outputs (exception being the Boss ACA pedals, see below).

Notes on certain pedals:

- Some older Boss pedals require 12Vdc, yet can be powered by a 9Vdc battery. They will indicate "Use ACA adaptor" near the power jack. To power an ACA pedal please use outputs 5-6, and set to 12Vdc on the DIP switch for the corresponding output. Modern Boss pedals will indicate "PSA," and can be powered by any of the 1 SPOT Pro CS6's 9Vdc outputs.
- Many germanium based fuzzes and Octavia-style pedals will require the use of the CYR adaptor to reverse the polarity to center pin positive.

- For pedals with high milliamp draws such as Strymon, please utilize outputs 1 or 2 that can produce 500mA each.
- Eventide pedals such as the Time Factor and H9 may be powered by outputs 1 or 2 with the addition of the CL6 converter, for proper DC jack tip size and polarity.
- Line 6 M5 may be powered by outputs 1 or 2.
- Line 6 M9, and the modeling pedals (DL-4/MM-4), may be powered by outputs 1 or 2, and will also require the CL6 converter.
- Line 6 Tone Core pedals may be powered by any 9Vdc output.
- Line 6 POD or M13 cannot be powered by the 1 SPOT Pro CS6.
- If more 9Vdc pedals need to be powered, a MC5 daisy chain (sold separately) may be plugged into any of the 9Vdc outputs depending on mA draw. For adding one more pedal, use the included MC2 cable.
- Pedals that do not utilize a power jack, yet are powered normally by a 9V battery, may utilize any 9Vdc output, along with the CBAT converter.
- TC Electronic Nova pedals may be powered by outputs 5-6 in the 12Vdc position.
- TC Electronic Classic and Tone Print series may be powered by any 9Vdc output.
- Digitech Whammy: Versions 1-4 cannot be powered by the 1 SPOT Pro CS6. Version 5 or Whammy DT may be powered by outputs 1 or 2.
- Radial Tonebone 15Vdc pedals can be powered by an 18Vdc output, using the Reverse Polarity Converter (CYR) included with the 1 SPOT Pro.

Warranty:

The 1 SPOT Pro CS6 carries a 5-year warranty to the original owner, covering faulty materials and workmanship.

The warranty is considered void for any of the following reasons:

1. The unit has been modified in any way.
2. Any repair has been attempted by anyone other than the manufacturer.

If your unit becomes defective during the warranty period, please contact Truetone to obtain a return authorization. All contact information can be found at Truetone.com

WARNING: Operation contrary to the guidelines set forth in this manual may damage your pedals. **Truetone is not responsible for the damage of your pedals by improper usage.**

Input Power Cable:

Your 1 SPOT Pro includes an input power cable. Insert the universal IEC plug into the socket on the back of the 1 SPOT pro. Plug the other end into a wall outlet or power strip.

Environmental Protection

The trash can symbol indicates that waste electrical products should not be disposed of with household waste. Please recycle where facilities exist. Check with your local authority or retailer for recycling advice.



FCC Notice:

Note: This equipment has been tested and found to comply with the limits for a Class B digital device, pursuant to part 15 of the FCC Rules. These limits are designed to provide reasonable protection against harmful interference in a residential installation. This equipment generates, uses and can radiate radio frequency energy and, if not installed and used in accordance with the instructions, may cause harmful interference to radio communications. However, there is no guarantee that interference will not occur in a particular installation. If this equipment does cause harmful interference to radio or television reception, which can be determined by turning the equipment off and on, the user is encouraged to try to correct the interference by one or more of the following measures:

- Reorient or relocate the receiving antenna.
- Increase the separation between the equipment and receiver.
- Connect the equipment into an outlet on a circuit different from that to which the receiver is connected.
- Consult the dealer or an experienced radio/TV technician for help.

Changes or modifications not expressly approved by Truetone could void the user's authority to operate the equipment.